



Northeast Unit Incident Overview

Presented by

Chuck Sprick
KE5RAD

Emergency Coordinator
Northeast Unit, District 14, ARES

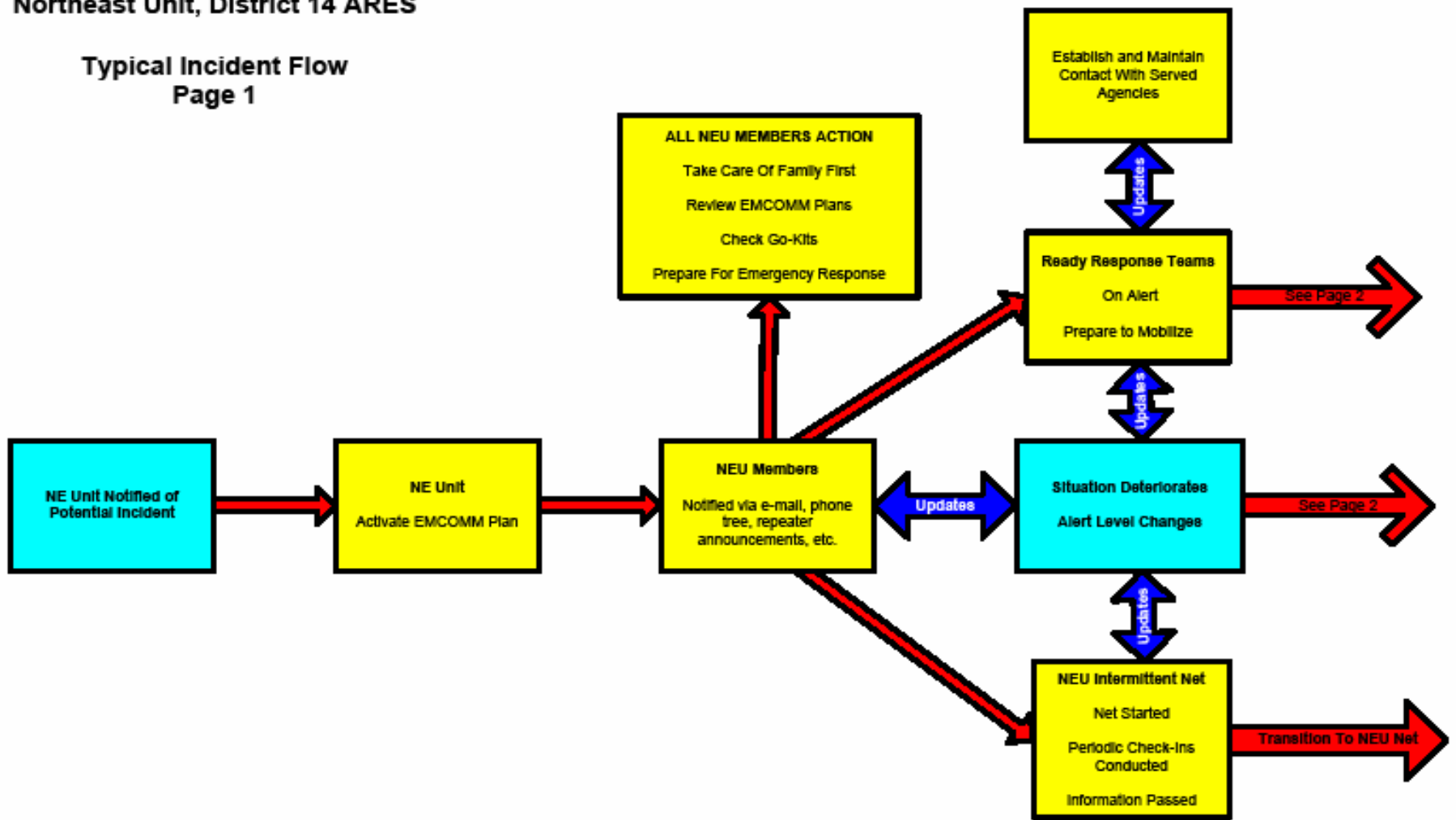


Phases of an Incident

- Notification - Get the word out
- Activation – Review Plan, Monitor e-mail and repeaters, Contact Served Agencies, Assemble gear and Standby prepared
- Mobilization – RRTs Deploy to Served Agencies
- Operation – NEU Net, Other RRTs and with Transtar
- Demobilization – Secure stations, cleanup and return home
- Documentation – Prepare After Action Report (AAR), document Lessons Learned, revise Plans for next time

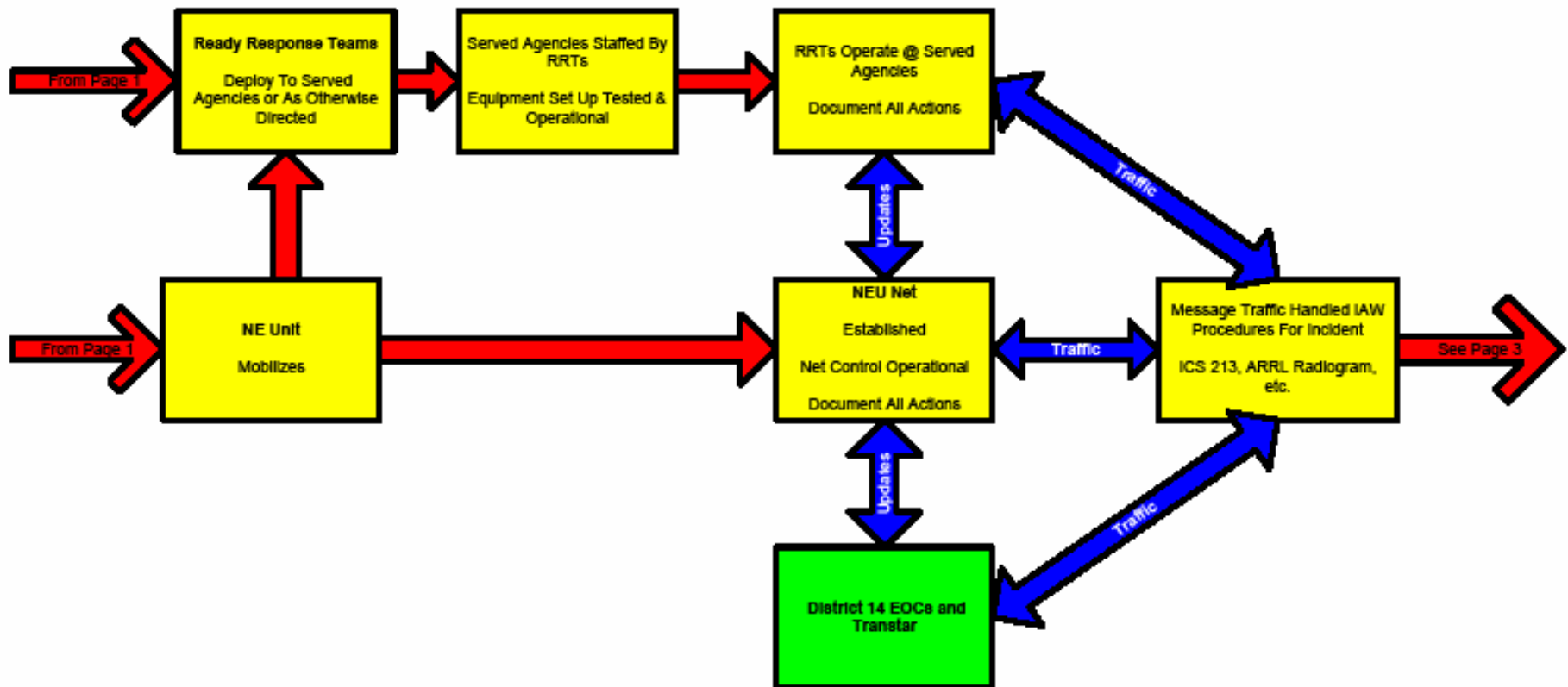
Northeast Unit, District 14 ARES

Typical Incident Flow
Page 1



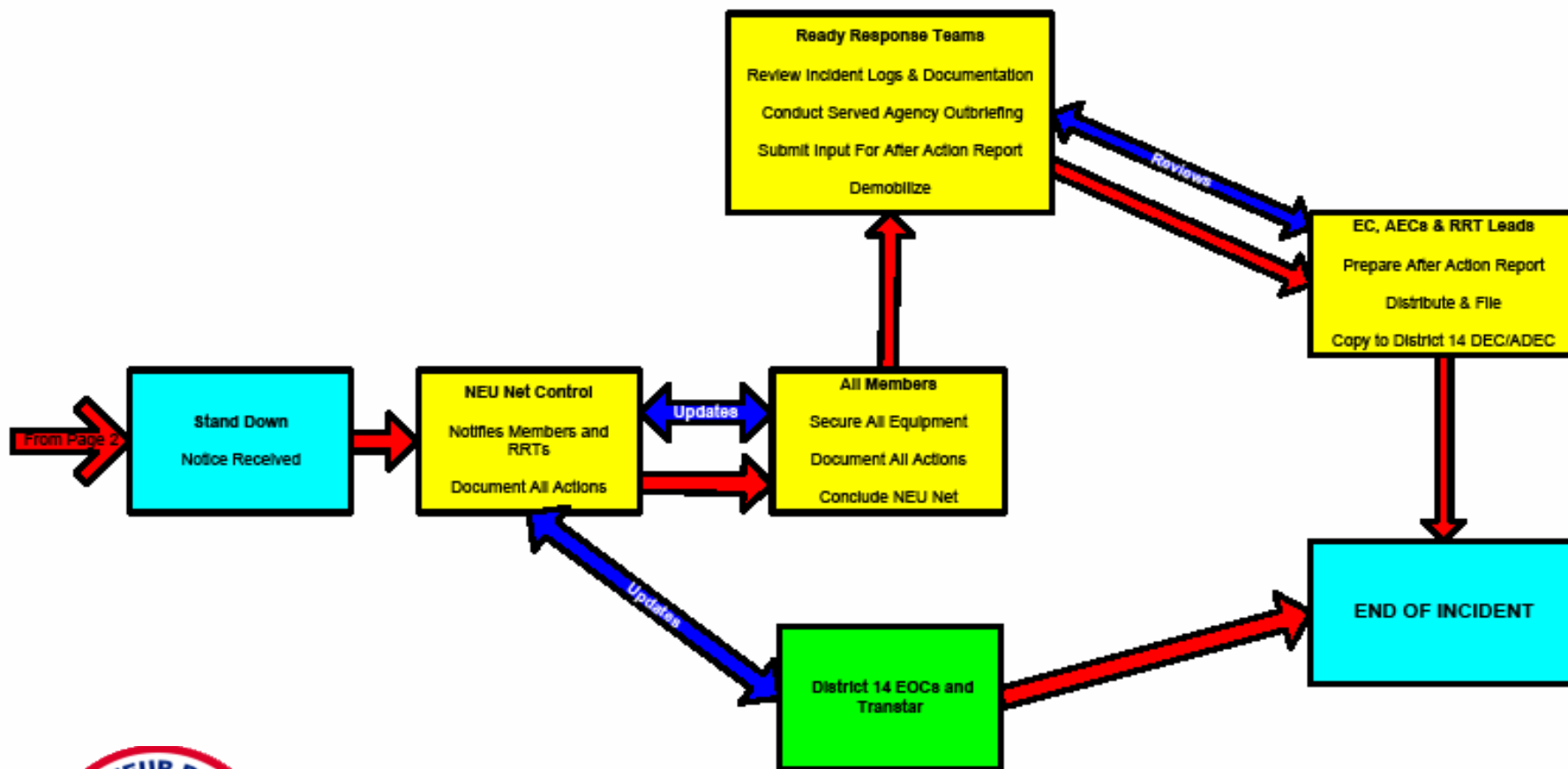
Northeast Unit, District 14 ARES

Typical Incident Flow Page 2



Northeast Unit, District 14 ARES

Typical Incident Flow Page 3





Summary

Phases of an Incident

- Notification
- Activation
- Mobilization
- Operation
- Demobilization
- Documentation